

MV Termination Accessories: Unscreened Separable Connector



RUSK

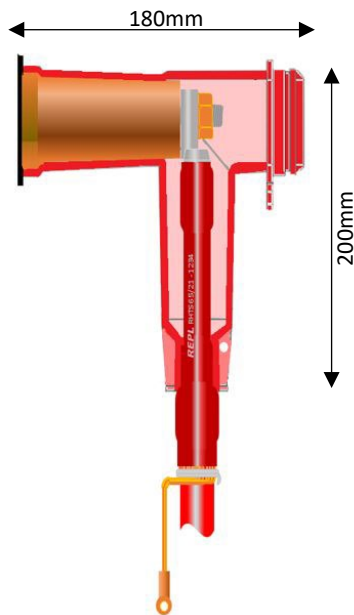
The REPL unscreened connector system is a right-angled adapter designed to fit over standard MV cable terminations when used with equipment bushings to Type C according to EN 50180 and EN 50181.

The RUSC can be easily disconnected for testing and then reconnected with standard tooling under dead break conditions.

The body is made from Silicon rubber-based material with excellent anti-tracking properties.

The body and termination are not screened and therefore during operation the surfaces will be considered live and must not be touched.

- RUSK-17: For Voltage Range 6/10(12)kV up to 12.7/15(17.5)kV
- RUSK-24: For Voltage Range 12/20 (24)kV
- For connection to C type bushings according to EN 50180 and EN 50181
- Tested to **CENELEC HD 629.1**
- One size is suitable for all cable types from 35 - 300mm²
- Easy to install with comprehensive instructions included in each kit
- Unlimited shelf life at normal storage temperatures
- Kits include a M16/M12 stud connection



Product Code	Kit Contents	Max Voltage	Bushing Type
RUSK-17 (Red)	Set of 3 moulded adaptors + installation grease, M16 to M12 threaded stud, washer and nut	8.7/15 (17.5)kV	630A, M16 bolted according to EN50180 / 50181
RUSK-24 (Grey)	Set of 3 moulded adaptors + installation grease, M16 to M12 threaded stud, washer and nut	12/20 (24)kV	630A, M16 bolted according to EN50180 / 50181

REPL reserve the right to update the information contained in this document at any time without notice. It is the user's responsibility to ensure it is suitable for the intended application. Any implied warranty relating to fitness for a particular purpose are explicitly excluded unless agreed in writing by REPL.

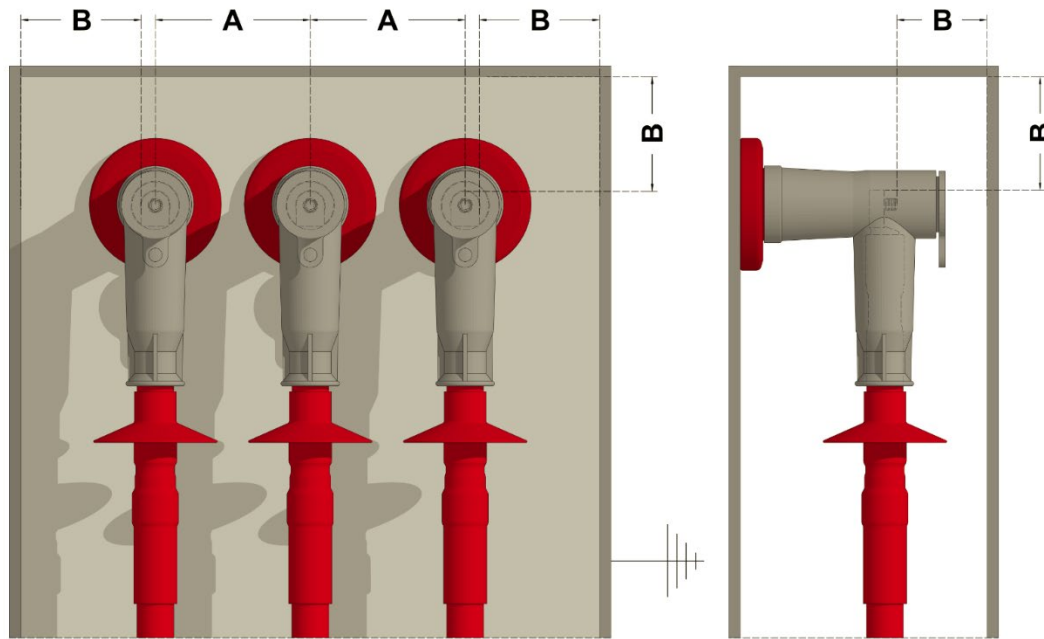
©REPL 2023



DATA SHEET

RUSK 23/1

MV Termination Accessories: Unscreened Separable Connector



Ensure that the minimum clearances are according to the table below for the required voltage level, these dimensions are in accordance with IEC 60071-1 to 71-3

Voltage Level U_0/U (U_{max})kV	3.8/6.6 (7.2)kV	6.35/11 (12)kV	8.7/15 (17.5)kV	12/20 (24)kV
Impulse Level (BIL)kV, peak	60kV	95k	95kV	125kV
Minimum clearance phase to phase (A)	45mm	75mm	90mm	90mm
Minimum clearance phase to earth (B)	35mm	60mm	75mm	75mm

REPL reserve the right to update the information contained in this document at any time without notice. It is the user's responsibility to ensure it is suitable for the intended application. Any implied warranty relating to fitness for a particular purpose are explicitly excluded unless agreed in writing by REPL.

©REPL 2023

